



KSI Data Science

drone | broadcast | collaborate

## What is your drone strategy?

**MissionKeeper** is the world's preeminent video and data management solution for drones, ground robots, underwater ROVs, CCTV, body cams and more.

With **MissionCaster**, multiple sources of video and data can be broadcast into a highly secure cloud environment where near real-time collaboration and data enrichment via analytics can take place.

When combined with post-mission archive and search, as well as full chain of custody security, MissionKeeper delivers the full turn-key solution you need.

### MissionKeeper

A pure cloud-based, highly secure, intuitive, collaborative environment for all your video and data regardless of source. The MissionKeeper service is accessible from desktops, laptops, tablets, and smartphones. Video and data is compiled from airborne, mobile devices, security cameras, and sensors. Building block applications provide basic services supporting a broad range of analytical problems. MissionKeeper is supported by MissionCaster hardware to ensure effective connectivity from the field.

#### Schedule a Mission

Set up your mission in advance with the MissionKeeper scheduler. Quickly schedule mission time and location, allocate hardware, send invitations and see upcoming scheduled missions with just a click.

#### Share on the fly

Sharing mission video and data in near-real time is at the heart of MissionKeeper and unlocks the real value. Click to invite members of your organization or enter an email address of anyone you would like to invite to your mission and they will get an instant invite to view and collaborate using just their browser.

#### Chat - Text and Audio

Take collaboration to another level with text and audio chat between anyone participating in the mission. Text chat logs are stored and indexed to the video so a comment alone can guide a user to important portions of a video when reviewing a mission.

#### Map

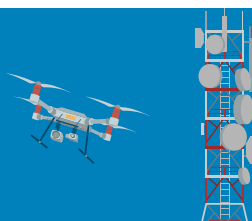
The Map provides context to your video. Without a real-time map, users have no awareness of where the platform is, was, or where it is looking. MissionKeeper's unique telemetry handling features allow the viewing of a live, moving map with the platform's positioning and mission history. The map also displays where locally logged-in users are in relation to the platform and its field of view.

#### Weather

Weather is one of the most important factors that will affect your flight. Every pilot is different in terms of what they look for in weather as to "go or not go" with flights. Real-time weather from the National Weather Service is available anytime with radar map and 3 local weather station conditions.

#### Security

In addition to the encrypted physical network, MissionCaster's output can be AES-256 encrypted as it is streamed, ensuring your video is secure and only shared with the users you invite. It is also stored in an encrypted format.



## MissionCaster

**It's all about the data**, getting your data to the cloud in real-time. MissionCaster is the first and only mobile video encoder you will ever need, bringing more value to your investments in remote sensing platforms. Broadcast live video (SD or HD via 4G LTE, WiFi, LAN, or satellite) to MissionKeeper for real-time awareness, archive and analysis, and sharing.

### MissionCaster Pro

MissionCaster Pro is our most flexible solution accepting inputs from virtually any remote platform. HDMI, SDI, analog, digital, composite or VGA? MissionCaster accepts them all. Just plug in, turn on the power and stream high-quality H.264-encoded video. MissionCaster delivers a MISP compliant transport stream complete with KLV metadata directly to MissionKeeper via LTE, WiFi, and Ethernet.



### MissionCaster Lite

MissionCaster Lite was designed with DJI customers in mind. MissionCaster Lite harnesses the power of the DJI platform allowing video and data to be broadcast via an LTE-enabled tablet connected to your DJI controller. Install the app on your tablet and immediately broadcast your video and data to MissionKeeper.



## Applications

### Public Safety

MissionKeeper easily ingests any type of remote sensor feed such as CCTV, drones, body cams, and ROV's and seamlessly integrates them into a synergistic platform that applies analytics to enrich that data and quickly allow users to identify, manage and solve security risks.

### Safety

The MissionKeeper platform provides a comprehensive, fully integrated approach to managing CCTV, drones, body cams and more in order to provide a state-of-the-art security solution .

### Industrial Inspection

The MissionKeeper system can assist with inspection of cell towers, power lines, gas pipelines, potable water tanks, offshore rigs, and more by removing the need for onsite inspection and enabling remote visual inspection in a collaborative environment.

### Insurance

Claims processing across large geographic regions, especially during times of crisis, can present insurance personnel with unexpected difficulties. By using collaborative drone platform, insurance companies can increase productivity significantly with the MissionKeeper platform.

### Underwater

MissionKeeper is the perfect platform for collaboratively broadcasting underwater search and rescue, inspection, salvage, and security operations to key people throughout the world.

### Entertainment

The MissionKeeper platform allows remote shooting units to securely and collaboratively stream their footage in near real time to the production's director and producers regardless of location as long as they have an internet connection.

## Contact Information: